

- 1
- 2
- 3
- 4
- 5
- 6
- 7
- 8
- 9
- 10
- 11
- 12
- 13
- 14
- 15
- 16
- 17
- 18
- 19

VERSIONS

- Type **A**: latch arm position perpendicular to the flange
- Type **B**: latch arm position parallel to the flange

IDENTIFICATION NO.

- **1**: chamfer, top
- **2**: chamfer, bottom
- **3**: chamfer, right
- **4**: chamfer, left

GUIDE

- Steel precision casting
- Zinc plated, blue passivated **ZB**
- Zinc plated and powder coated
- Black, RAL 9005, textured finish **SW**
- Stainless steel precision casting AISI CF-8 **NI**

LEVER

- Steel precision casting
- Zinc plated, blue passivated
- Stainless steel precision casting AISI CF-8

PLUNGER

- Steel, case-hardened
- Zinc plated, blue passivated
- Stainless steel AISI 431, hardened

SPRING

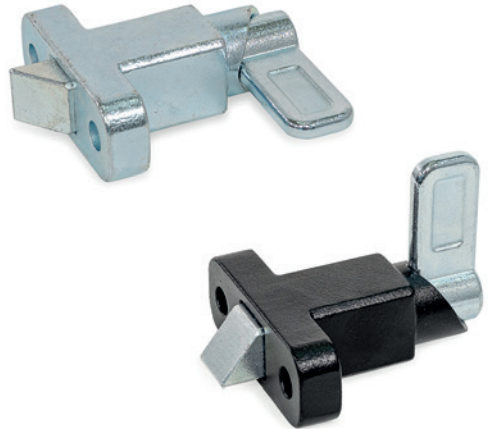
AISI 316Ti stainless Steel

FEATURES AND APPLICATIONS

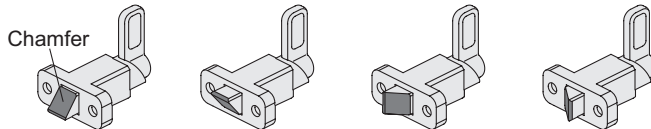
Spring latches GN 724.2 have a plunger pin with square cross-section, a latching surface on one side and a chamfer on the other. When moving in the direction of the chamfered pin, the plunger pin passes over grooves and edges, as the chamfered pin moves the plunger pin into the guide. The plunger pin automatically latches into place when moved toward the latching surface. The latching can be released by pulling the latch arm.

The notch at the upper end of the curve causes the latch to be held in place if the plunger pin needs to be kept temporarily from protruding. The dimensional tolerances between the pin and the guide have been chosen to ensure functional reliability even in roughly dimensioned applications or in the event of soiling. The latching mechanism is pre-lubricated and can be re-lubricated if necessary.

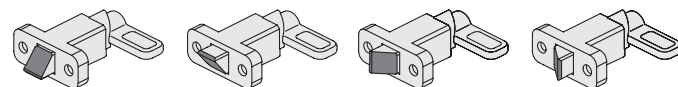
There are several options for fastening. The hex mounting holes allow the use of socket cap screws ISO 4762 and hex head screws or nuts according to DIN 931 or DIN 934.



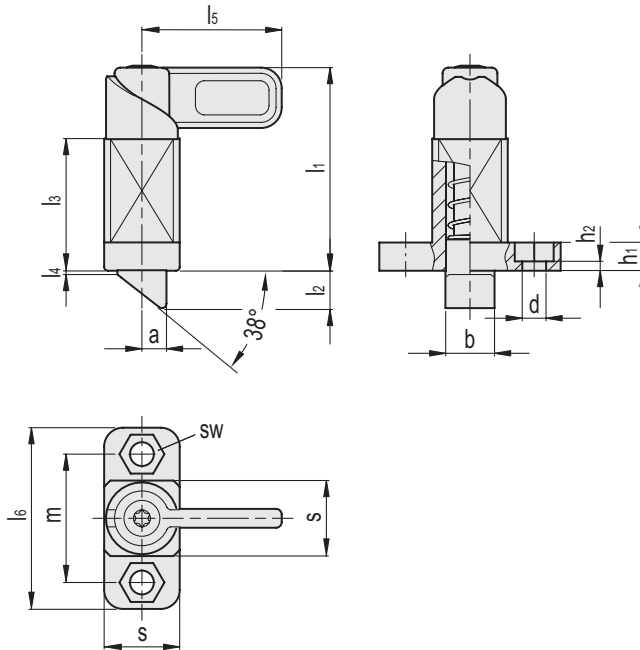
GN 724.2-ST-A1 GN 724.2-ST-A2 GN 724.2-ST-A3 GN 724.2-ST-A4



GN 724.2-ST-B1 GN 724.2-ST-B2 GN 724.2-ST-B3 GN 724.2-ST-B4



Indexing and positioning elements



Conversion Table	
1 mm = 0.039 inch	
b	
mm	inch
13	0.51
20	0.78

GN 724.2-A1

METRIC

Code	Description	d+0.2	a	b	h1	h2	l1	l2	l3	l4	l5	l6	s	sw	m	Spring preload [N]	Spring max load [N]	⚖️
GN.78542	GN 724.2-13-20-A1-SW	6.1	6.5	13	7.5	1.5	54	10	35	1	37	48	20	10	34	14	35	165
GN.78543	GN 724.2-13-20-A1-ZB	6.1	6.5	13	7.5	1.5	54	10	35	1	37	48	20	10	34	14	35	165
GN.78572	GN 724.2-20-30-A1-SW	10.1	10	20	15	5	84	15	54	1.5	55	80	30	17	55	22	70	612
GN.78573	GN 724.2-20-30-A1-ZB	10.1	10	20	15	5	84	15	54	1.5	55	80	30	17	55	22	70	612

GN 724.2-A2

Code	Description	d+0.2	a	b	h1	h2	l1	l2	l3	l4	l5	l6	s	sw	m	Spring preload [N]	Spring max load [N]	⚖️
GN.78545	GN 724.2-13-20-A2-SW	6.1	6.5	13	7.5	1.5	54	10	35	1	37	48	20	10	34	14	35	165
GN.78546	GN 724.2-13-20-A2-ZB	6.1	6.5	13	7.5	1.5	54	10	35	1	37	48	20	10	34	14	35	165
GN.78575	GN 724.2-20-30-A2-SW	10.1	10	20	15	5	84	15	54	1.5	55	80	30	17	55	22	70	612
GN.78576	GN 724.2-20-30-A2-ZB	10.1	10	20	15	5	84	15	54	1.5	55	80	30	17	55	22	70	612

GN 724.2-A3

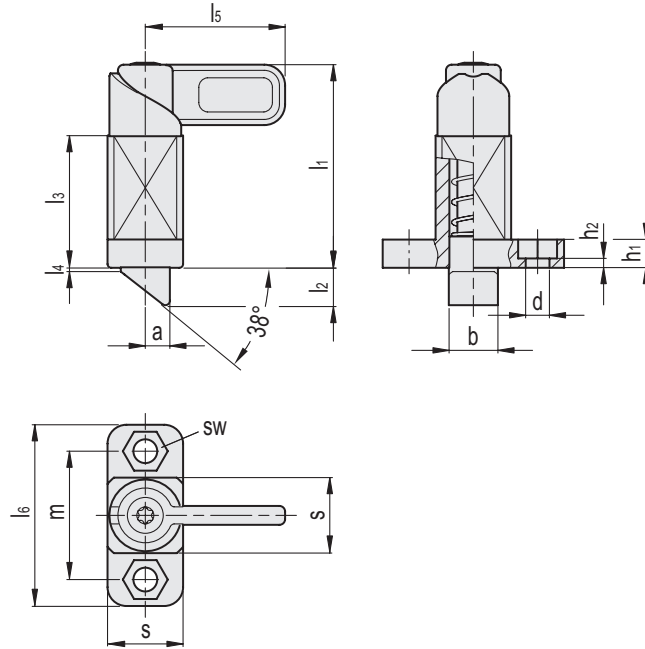
Code	Description	d+0.2	a	b	h1	h2	l1	l2	l3	l4	l5	l6	s	sw	m	Spring preload [N]	Spring max load [N]	⚖️
GN.78548	GN 724.2-13-20-A3-SW	6.1	6.5	13	7.5	1.5	54	10	35	1	37	48	20	10	34	14	35	165
GN.78549	GN 724.2-13-20-A3-ZB	6.1	6.5	13	7.5	1.5	54	10	35	1	37	48	20	10	34	14	35	165
GN.78578	GN 724.2-20-30-A3-SW	10.1	10	20	15	5	84	15	54	1.5	55	80	30	17	55	22	70	612
GN.78579	GN 724.2-20-30-A3-ZB	10.1	10	20	15	5	84	15	54	1.5	55	80	30	17	55	22	70	612

GN 724.2-A4

Code	Description	d+0.2	a	b	h1	h2	l1	l2	l3	l4	l5	l6	s	sw	m	Spring preload [N]	Spring max load [N]	⚖️
GN.78551	GN 724.2-13-20-A4-SW	6.1	6.5	13	7.5	1.5	54	10	35	1	37	48	20	10	34	14	35	165
GN.78552	GN 724.2-13-20-A4-ZB	6.1	6.5	13	7.5	1.5	54	10	35	1	37	48	20	10	34	14	35	165
GN.78581	GN 724.2-20-30-A4-SW	10.1	10	20	15	5	84	15	54	1.5	55	80	30	17	55	22	70	612
GN.78582	GN 724.2-20-30-A4-ZB	10.1	10	20	15	5	84	15	54	1.5	55	80	30	17	55	22	70	612



- 1
- 2
- 3
- 4
- 5
- 6
- 7
- 8
- 9
- 10
- 11
- 12
- 13
- 14
- 15
- 16
- 17
- 18
- 19



Conversion Table	
1 mm = 0.039 inch	
b	
mm	inch
13	0.51
20	0.78

METRIC

GN 724.2-NI-A1

Code	Description	d+0.2	a	b	h1	h2	l1	l2	l3	l4	l5	l6	s	sw	m	Spring preload [N]	Spring max load [N]	⚖️
GN.78541	GN 724.2-13-20-A1-NI	6.1	6.5	13	7.5	1.5	54	10	35	1	37	48	20	10	34	14	35	142
GN.78571	GN 724.2-20-30-A1-NI	10.1	10	20	15	5	84	15	54	1.5	55	80	30	17	55	22	70	492

GN 724.2-NI-A2

Code	Description	d+0.2	a	b	h1	h2	l1	l2	l3	l4	l5	l6	s	sw	m	Spring preload [N]	Spring max load [N]	⚖️
GN.78544	GN 724.2-13-20-A2-NI	6.1	6.5	13	7.5	1.5	54	10	35	1	37	48	20	10	34	14	35	142
GN.78574	GN 724.2-20-30-A2-NI	10.1	10	20	15	5	84	15	54	1.5	55	80	30	17	55	22	70	492

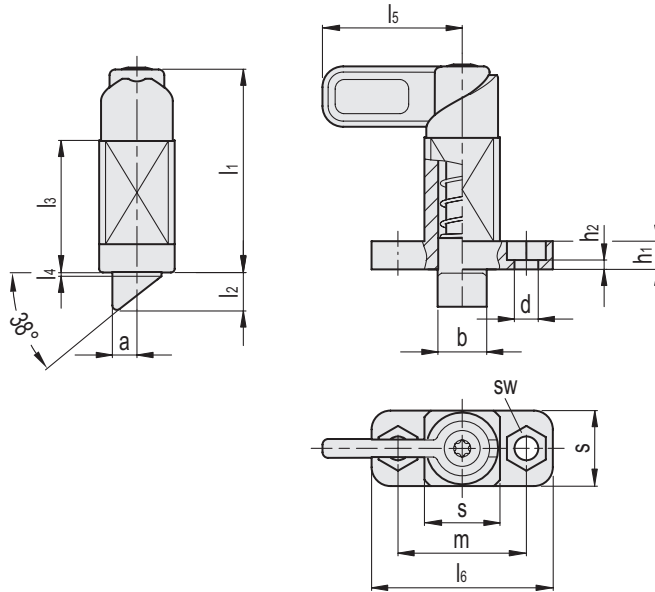
GN 724.2-NI-A3

Code	Description	d+0.2	a	b	h1	h2	l1	l2	l3	l4	l5	l6	s	sw	m	Spring preload [N]	Spring max load [N]	⚖️
GN.78547	GN 724.2-13-20-A3-NI	6.1	6.5	13	7.5	1.5	54	10	35	1	37	48	20	10	34	14	35	142
GN.78577	GN 724.2-20-30-A3-NI	10.1	10	20	15	5	84	15	54	1.5	55	80	30	17	55	22	70	492

GN 724.2-NI-A4

Code	Description	d+0.2	a	b	h1	h2	l1	l2	l3	l4	l5	l6	s	sw	m	Spring preload [N]	Spring max load [N]	⚖️
GN.78550	GN 724.2-13-20-A4-NI	6.1	6.5	13	7.5	1.5	54	10	35	1	37	48	20	10	34	14	35	142
GN.78580	GN 724.2-20-30-A4-NI	10.1	10	20	15	5	84	15	54	1.5	55	80	30	17	55	22	70	492

Indexing and positioning elements



Conversion Table 1 mm = 0.039 inch	
b	
mm	inch
13	0.51
20	0.78

GN 724.2-B1

METRIC

Code	Description	d+0.2	a	b	h1	h2	l1	l2	l3	l4	l5	l6	s	sw	m	Spring preload [N]	Spring max load [N]	⚖️
GN.78554	GN 724.2-13-20-B1-SW	6.1	6.5	13	7.5	1.5	54	10	35	1	37	48	20	10	34	14	35	165
GN.78555	GN 724.2-13-20-B1-ZB	6.1	6.5	13	7.5	1.5	54	10	35	1	37	48	20	10	34	14	35	165
GN.78584	GN 724.2-20-30-B1-SW	10.1	10	20	15	5	84	15	54	1.5	55	80	30	17	55	22	70	612
GN.78585	GN 724.2-20-30-B1-ZB	10.1	10	20	15	5	84	15	54	1.5	55	80	30	17	55	22	70	612

GN 724.2-B2

Code	Description	d+0.2	a	b	h1	h2	l1	l2	l3	l4	l5	l6	s	sw	m	Spring preload [N]	Spring max load [N]	⚖️
GN.78557	GN 724.2-13-20-B2-SW	6.1	6.5	13	7.5	1.5	54	10	35	1	37	48	20	10	34	14	35	165
GN.78558	GN 724.2-13-20-B2-ZB	6.1	6.5	13	7.5	1.5	54	10	35	1	37	48	20	10	34	14	35	165
GN.78587	GN 724.2-20-30-B2-SW	10.1	10	20	15	5	84	15	54	1.5	55	80	30	17	55	22	70	612
GN.78588	GN 724.2-20-30-B2-ZB	10.1	10	20	15	5	84	15	54	1.5	55	80	30	17	55	22	70	612

GN 724.2-B3

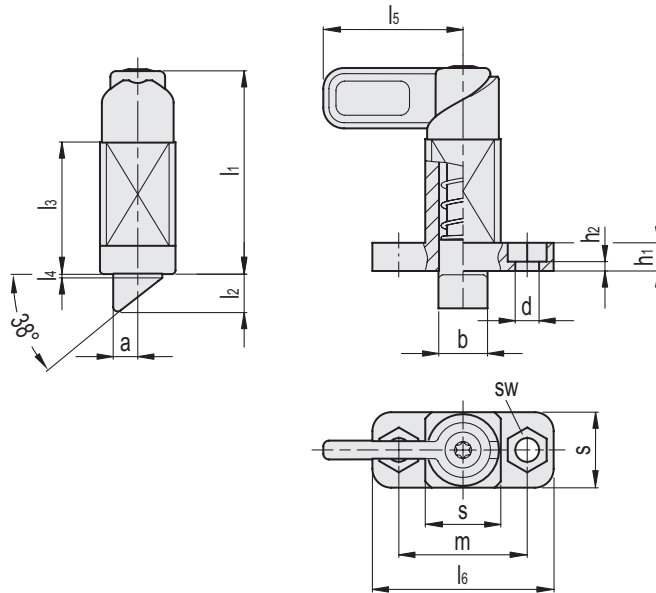
Code	Description	d+0.2	a	b	h1	h2	l1	l2	l3	l4	l5	l6	s	sw	m	Spring preload [N]	Spring max load [N]	⚖️
GN.78560	GN 724.2-13-20-B3-SW	6.1	6.5	13	7.5	1.5	54	10	35	1	37	48	20	10	34	14	35	165
GN.78561	GN 724.2-13-20-B3-ZB	6.1	6.5	13	7.5	1.5	54	10	35	1	37	48	20	10	34	14	35	165
GN.78590	GN 724.2-20-30-B3-SW	10.1	10	20	15	5	84	15	54	1.5	55	80	30	17	55	22	70	612
GN.78591	GN 724.2-20-30-B3-ZB	10.1	10	20	15	5	84	15	54	1.5	55	80	30	17	55	22	70	612

GN 724.2-B4

Code	Description	d+0.2	a	b	h1	h2	l1	l2	l3	l4	l5	l6	s	sw	m	Spring preload [N]	Spring max load [N]	⚖️
GN.78563	GN 724.2-13-20-B4-SW	6.1	6.5	13	7.5	1.5	54	10	35	1	37	48	20	10	34	14	35	165
GN.78564	GN 724.2-13-20-B4-ZB	6.1	6.5	13	7.5	1.5	54	10	35	1	37	48	20	10	34	14	35	165
GN.78593	GN 724.2-20-30-B4-SW	10.1	10	20	15	5	84	15	54	1.5	55	80	30	17	55	22	70	612
GN.78594	GN 724.2-20-30-B4-ZB	10.1	10	20	15	5	84	15	54	1.5	55	80	30	17	55	22	70	612



- 1
- 2
- 3
- 4
- 5
- 6
- 7
- 8
- 9
- 10
- 11
- 12
- 13
- 14
- 15
- 16
- 17
- 18
- 19



Conversion Table	
1 mm = 0.039 inch	
b	
mm	inch
13	0.51
20	0.78

METRIC

GN 724.2-NI-B1

Code	Description	d+0.2	a	b	h1	h2	l1	l2	l3	l4	l5	l6	s	sw	m	Spring preload [N]	Spring max load [N]	⚖
GN.78553	GN 724.2-13-20-B1-NI	6.1	6.5	13	7.5	1.5	54	10	35	1	37	48	20	10	34	14	35	142
GN.78583	GN 724.2-20-30-B1-NI	10.1	10	20	15	5	84	15	54	1.5	55	80	30	17	55	22	70	492

GN 724.2-NI-B2

Code	Description	d+0.2	a	b	h1	h2	l1	l2	l3	l4	l5	l6	s	sw	m	Spring preload [N]	Spring max load [N]	⚖
GN.78556	GN 724.2-13-20-B2-NI	6.1	6.5	13	7.5	1.5	54	10	35	1	37	48	20	10	34	14	35	142
GN.78586	GN 724.2-20-30-B2-NI	10.1	10	20	15	5	84	15	54	1.5	55	80	30	17	55	22	70	492

GN 724.2-NI-B3

Code	Description	d+0.2	a	b	h1	h2	l1	l2	l3	l4	l5	l6	s	sw	m	Spring preload [N]	Spring max load [N]	⚖
GN.78559	GN 724.2-13-20-B3-NI	6.1	6.5	13	7.5	1.5	54	10	35	1	37	48	20	10	34	14	35	142
GN.78589	GN 724.2-20-30-B3-NI	10.1	10	20	15	5	84	15	54	1.5	55	80	30	17	55	22	70	492

GN 724.2-NI-B4

Code	Description	d+0.2	a	b	h1	h2	l1	l2	l3	l4	l5	l6	s	sw	m	Spring preload [N]	Spring max load [N]	⚖
GN.78562	GN 724.2-13-20-B4-NI	6.1	6.5	13	7.5	1.5	54	10	35	1	37	48	20	10	34	14	35	142
GN.78592	GN 724.2-20-30-B4-NI	10.1	10	20	15	5	84	15	54	1.5	55	80	30	17	55	22	70	492

Indexing and positioning elements